


# PSYCHOLOGY

 **Accredited** programmes from **Malaysia, UK** and **USA**

 Designed and taught by **practicing psychologists** and **researchers**

 Bringing **industry** into the classroom

In collaboration with



**SEGi**  
University &  
Colleges

**18,000**  
Students



**550** Academics | **9.1%** foreign faculty staff

**546**  
Management & support staff



Quality education accredited and assured by the Malaysian Ministry of Education and other organisations



Internal processes in compliance with international standards

ISO 9001:2015 Certified



Cert no: MY14/05009

Cert no: MY14/01588



## INTRODUCTION TO

# SEGi UNIVERSITY & COLLEGES

Established for more than 46 years, SEGi has equipped graduates from diverse backgrounds with exceptional foundations for career achievement and personal success.

SEGi first opened its doors as Systematic College in 1977 in the heart of Kuala Lumpur's commercial district, offering professional qualifications. Since then, SEGi has experienced significant growth by adapting and catering to an increasing demand for higher academic and professional qualifications in Malaysia.

Today, SEGi is one of the largest private higher education providers in Malaysia and serves more than 18,000 students through its five major campuses located in Kota Damansara, Kuala Lumpur, Subang Jaya, Penang and Kuching. With programmes tailored to meet both industry and student needs, SEGi graduates have easily found employment and many have gone on to become leaders of their respective industries.

# RAISING THE BAR ON MENTAL HEALTH



The QS Stars™ rating system has been operated by the QS Intelligence Unit, the independent compiler of the QS World University Rankings® since 2004. The system evaluates universities across various important performance indicators as set against pre-established international standards. By covering a broader range of criteria than any world ranking exercise, QS Stars™ shines a light on both the excellence and the diversity of the rated institution.



**A**s you prepare to pursue a career in Psychology, SEGi's psychology programmes help you attain the necessary skills that prospective employers in a range of careers find attractive.

Designed and taught by practising psychologists and active researchers, our courses reflect the breadth of the discipline from cognitive psychology and neuroscience to developmental psychology, positive psychology as well as social psychology. As you go through the programme you will not only be well prepared to excel in the world of psychology and mental health through our strong curriculum, but also organise events, volunteer in outreach projects and engage with the industry to put what you've learnt in the classrooms to the real world.

The mental health industry in the country and the greater Asian region is undergoing tremendous growth propelled by the raising awareness and the need for better mental health care and services. We invite you to join us in playing a part in this exciting field and be a leading voice in advocating for better mental health.



Teaching



Internationalisation



Online Learning



Arts & Culture



Employability



Academic Development



Bachelor of Medicine and  
Bachelor of Surgery (MBBS)



Inclusiveness

# Bringing the world to you

# PARTNER

# UNIVERSITIES



## University of Greenwich (UoG), UK



Modestly founded in 1890 as Woolwich Polytechnic, the University of Greenwich (UoG) has risen in the ranks since it gained university status in 1992. A leader in the educational arena, the university has three campuses in South East London and Kent, and is a strong proponent of progressive learning, as is proven by its modern hi-tech facilities. Its 1,200 programmes include Law, Nursing, Business, and Engineering.

Acknowledged the world over as a leading provider of higher education according to the 2017 Teaching Excellence Framework (TEF), UoG is also the proud recipient of The Queen's Anniversary Prize for Higher and Further Education 2015, an award recognising the innovative research and development carried out by Greenwich's Natural Resources Institute within the Faculty of Engineering and Science.

- **QS World Ranking 701-750**
- **Times Higher Education World Ranking 601-800**
- **#1 Transnational University in UK** (Over 17,000 students in overseas campuses all around the world)
- Over 50% of Graduates received First Class Honours in the last 5 years
- Awarded **SILVER STATUS** by Teaching Excellence Framework (TEF)



## Troy University, USA



Troy University is a public school in Troy, Alabama, USA with three additional campuses throughout the state. Founded in 1887 as an institute for training teachers, it has expanded into a university system that offers more than 45 undergraduate majors and locations across the globe, including Vietnam, Malaysia, Japan, and South Korea.

International in scope, Troy University provides a variety of educational programs at the undergraduate and graduate levels, to include doctoral programs, for a diverse student body in traditional, nontraditional and emerging electronic formats. With quality teaching and a staff to student ratio above the national average, a degree from Troy University is solid preparation for employment or further study.

- Accredited by:
  - Southern Association of Colleges and Schools Commission on Colleges (SASCOC)
  - Council for Higher Education Accreditation (CHEA)
  - Dual-accreditation from Association to Advance Collegiate Schools of Business (AACSB International)
- **"No 1 in its Best 4-Year College in Alabama"** by Schools.com
- **"One of the Best Universities in the Southeast"** by Princeton Review
- **"a 'Top Tier' university in the South"** by US News & World Report

# WHY STUDY PSYCHOLOGY WITH SEGi?



Psychology at Greenwich is ranked at the top three universities in London and seventh in the UK for graduate careers (2021, Guardian League Table).



Psychology at Greenwich is ranked at the top two universities in London for student satisfaction with learning resources (2019, National Student Survey).



Taught by research-active staff who are experts in their fields.



Opportunity to choose a defined pathway that includes specialist modules and assessments in Child, Forensic or Sport & Exercise Psychology.



Supports learning with lectures and seminars. Seminars enable students to discuss and develop their understanding of topics covered in lectures in smaller groups. Some modules are conducted through combined seminars with UK students. This promotes students' understanding of psychology in a local and international context.



A British Psychological Society accredited curriculum that will help prepare students for a variety of career pathways. The British Psychological Society is a registered charity that acts as the representative body for psychology and psychologists in the UK, and is responsible for the promotion of excellence and ethical practice in the science, education, and application of the discipline.

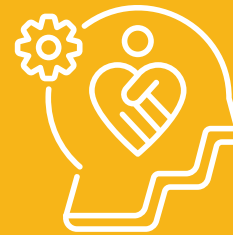


# BRANCHES OF P



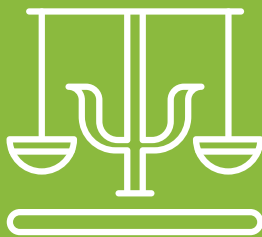
## Developmental / Child Psychology

Developmental Psychology is the study of human growth (physical, mental, emotional, etc.) from young to old. In addition, this subject will teach about special-needs individuals such as those with autism and attention-deficit hyperactivity disorder (ADHD) so that students will understand the differences between healthy individuals and special-needs individuals. Job opportunities: special-needs educators, social workers. Relevant fields for post-graduate studies: Child Psychology, Developmental Psychology, Applied Behaviour Analysis.



## Abnormal Psychology

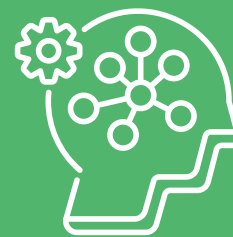
Abnormal Psychology is the study of unusual behaviours and focuses on mental illnesses such as depression and post-traumatic stress disorder (PTSD). At the degree level, students will understand the fundamentals of different types of mental illnesses. To practise as clinical psychologists, a Master's Degree in Clinical Psychology is required.



## Forensic Psychology

Forensic psychology explains different types of criminal behaviour from various psychological perspectives, the role of forensic psychology practitioners and criminal justice institutions in the rehabilitation and punishment of offenders, and how these processes may vary for certain categories of offender. Job opportunities: Forensic Psychology students need at least a Master's or a PhD to work as a forensic psychologists or researchers.

Relevant fields for post-graduate studies: Criminal Psychology, Forensic Psychology, Law.



## Cognitive Psychology

Cognitive Psychology is the study of how the human mind works. Topics such as attention, perception, memory and problem-solving, are covered. Job opportunities: To practise as neurofeedback\* therapists, students need at least a Master's or a PhD to work in cognitive psychology.

Relevant fields for post-graduate studies: Cognitive Psychology, Neuroscience, Cognitive Behaviour Therapy.

\*During a neurofeedback session, the therapist uses EEG to record brainwaves and makes suggestions to change a particular behaviour based on the results of the machine.

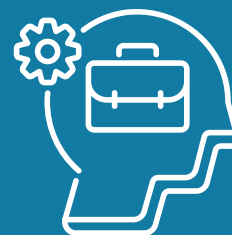


# PSYCHOLOGY



## Clinical Psychology

Clinical psychology is a branch of psychology concerned with the assessment and treatment of mental illness, abnormal behaviour, and psychiatric problems. This field integrates the science of psychology with the treatment of complex human problems, making it an exciting career choice for people who are looking to work in a challenging and rewarding field.



## Industrial / Organisational Psychology

Industrial / Organisational psychology is a branch of psychology that applies psychological theories, methods and research into understanding and improving workers, workplaces, and an organisation's productivity and well-being. Other similar terms are occupational psychology, work psychology, work and organisational psychology, managerial psychology, management psychology, personnel psychology, consumer psychology, engineering psychology, business psychology, human resource management, and organisational behaviour.



## Counselling Psychology

Counselling psychology is a branch of psychology that applies psychological theories, methods and research in working collaboratively with clients across a diverse range of human problems such as vocational selection, school problems, drug abuse, and marital conflict. In contrast to clinical psychologists, counselling psychologists often work with clients who are experiencing less severe symptoms. Other related terms are guidance and counselling.



## Educational Psychology

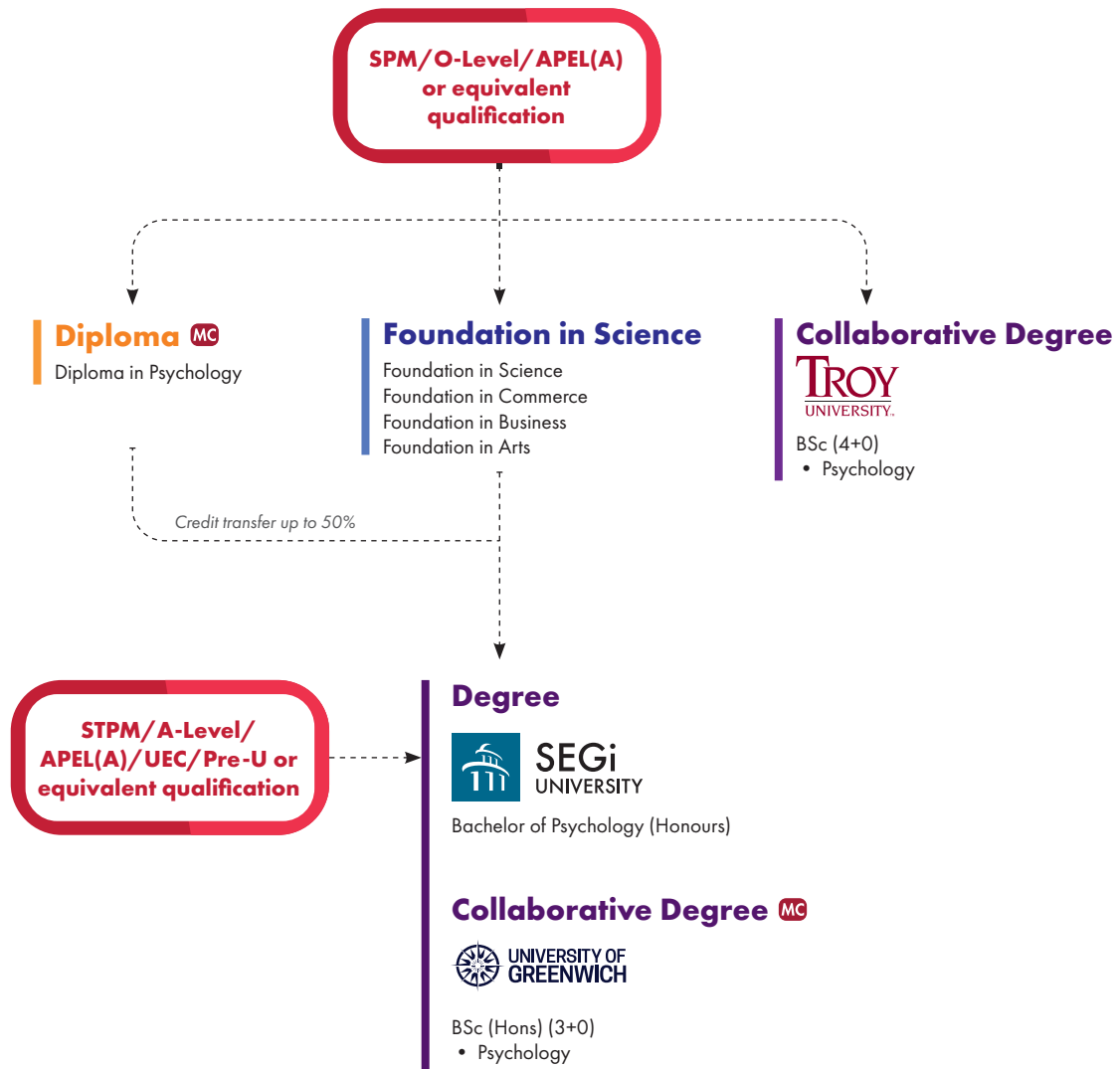
Educational psychology is a branch of psychology that applies psychological theories, methods and research in understanding and improving how humans learn in educational settings, the effectiveness of educational interventions, the psychology of teaching, and the social psychology of schools as organisations. Another related term is school psychology.



## Neuropsychology

Neuropsychology is a branch of psychology that applies psychological theories, methods and research in the assessment and treatment of behaviour directly related to brain function. Other related terms are neuroscience and cognitive neuropsychology, and clinical neuropsychology.

# STUDY ROUTE



## Credit Transfer

Your previous studies and qualifications may earn you credits towards your diploma or degree. The award of credits is given on the basis of subject mapping and grades achieved. The maximum transferable credits you may earn for a previous academic qualification could be 50% of the total credits for the Bachelor's degree. Work experience, MOOCs and other training certifications may earn you credit transfers of up to 30%. All credit transfers are subject to approval by the Senate or Academic Board.

## <sup>MC</sup> Micro-credential

We break it down to build you up. SEGi's Micro-credentials are unbundled from accredited qualifications, offering the modern learners a tempting, tantalising buffet-style learning model. While traditional diplomas or degrees are well-structured and solid, SEGi's Micro-credentials offer learners the choice of ultimate flexibility and customisation, empowering learners to select only what they want to consume, experience and learn. Through our innovative curriculum framework, these unbundled

# PROGRAMME MATRIX

Programme	Awarding Institution	Entry Requirements	Campus
<b>Bachelor of Psychology (Honours)</b> KD (N/311/6/0114) (03/27) (MQA/PA13378)	SEGi University	<ul style="list-style-type: none"> <li>• SPM or equivalent with 5 credits</li> <li>• UEC with 5 credits</li> <li>• STPM with Grade C in 2 subjects</li> <li>• A-Level with passes in 2 subjects</li> <li>• Matriculation / Foundation or equivalent</li> <li>• SAM / AUSMAT with min ATAR 60</li> <li>• Related SKM Level 5</li> <li>• Any Diploma or equivalent</li> <li>• MQA-APEL T6</li> </ul>	Kota Damansara
<b>BSc in Psychology (4+0)</b> SJ (R/311/6/0065) (05/25) (MQA/FA6135) KL (R/311/6/0056) (01/27) (MQA/FA4730) PG (R/311/6/0072) (10/27) (MQA/FA6533)	Troy University, USA	<b>Additional Requirements</b> Credits in Maths and Science at SPM / O-Level or equivalent and pass in English	Subang Jaya Kuala Lumpur Penang
<b>BSc (Hons) Psychology (3+0)</b> SJ (N/311/6/0112) (06/24) (MQA/PA11475)	University of Greenwich, UK	Entry into the first year (Level 4): <ul style="list-style-type: none"> <li>• STPM (grade profile CC) and minimum SPM English grade 1A/2A (or SEGi English Placement Test, Band 4) with at least a credit for SPM Maths and SPM Science</li> <li>• Successful completion of Senior Middle Unified Examination Certificate (UEC) with a minimum pass average of 60% and minimum UEC English grade A1-C8 (or SEGi English Placement, Band 4)</li> <li>• Matriculation or Foundation or equivalent (minimum CGPA 2.0 out of 4.0), with at least a credit for SPM Maths and SPM Science and SEGi English Placement Test, Band 4</li> <li>• Diploma or equivalent (minimum CGPA 2.0 out of 4.0), with at least a credit for SPM Maths and SPM and SEGi English Placement Test, Band 4</li> </ul> OR Entry into the second year (Level 5): <ul style="list-style-type: none"> <li>• Psychology Diploma from SEGi (2.5 years duration), minimum CGPA 2.0, and IELTS 6.0 with a minimum of 5.5 in each skill OR minimum SPM English grade 1A/2A or SEGi English Placement Test, Band 4</li> </ul>	Subang Jaya
<b>Diploma in Psychology</b> SJ (R2/311/4/0021) (07/23) (A8786) PG (N/311/4/0128) (12/26) (MQA/PA15092) SWK (R2/311/4/0085) (01/27) (MQA/FA1374)	SEGi College	<ul style="list-style-type: none"> <li>• SPM / O-Level or equivalent with 3 credits</li> <li>• UEC with 3 credits</li> <li>• Related SKM Level 3</li> <li>• Related Certificate or equivalent</li> <li>• MQA-APEL T4</li> </ul> <b>Additional Requirements</b> Pass in Maths, Science and English at SPM / O-Level or equivalent	Subang Jaya Penang Sarawak
<b>Foundation in Science</b> KD (R2/010/3/0356) (07/25) (MQA/A4432) SJ (R2/000/3/0021) (04/23) (A7755)	SEGi University / SEGi College	<ul style="list-style-type: none"> <li>• SPM / O-Level or equivalent with 5 credits</li> <li>• UEC with min.B in 3 subjects</li> </ul>	Kota Damansara Subang Jaya
<b>Foundation in Commerce</b> KL (R2/010/3/0258) (02/25) (A5212)	SEGi	<ul style="list-style-type: none"> <li>• SPM / O-Level or equivalent with 5 credits</li> <li>• UEC with 3 credits</li> </ul>	Kuala Lumpur
<b>Foundation in Business</b> SWK (R3/010/3/0418) (10/26) (A7097)			Sarawak
<b>Foundation in Arts</b> KD (R2/010/3/0406) (07/26) (MQA/FA0193) SJ (R2/010/3/0541) (07/26) (MQA/FA0452)			Kota Damansara Subang Jaya
<b>Foundation in Science</b> KD (R2/010/3/0356) (07/25) (MQA/A4432) SJ (R2/000/3/0021) (04/23) (A7755)			Kota Damansara Subang Jaya

## ENGLISH REQUIREMENTS\*

Types of Exam	Diploma	Degree	Master
IELTS	Band 5.5	Band 6.0	Band 6.5
TOEFL iBT	42	46	60
Cambridge English	154	160	169
Pearson Test	47	51	59
Linguaskill Cambridge	154 - 161	169 - 175	176 - 179
MUET	Band 2	Band 3	

\*The English requirement serves as a guideline and it is subject to change. The weightage requirement may vary for different programmes.

## ENTRY REQUIREMENTS FOR INTERNATIONAL STUDENTS



[bit.ly/isentry23](https://bit.ly/isentry23)

### A pathway for everyone

Your prior-qualifications were not mentioned?  
Did not meet the entry requirements?

When there is a will, there's always a way. Contact us and schedule a FREE one-on-one consultation session to plot out a customised pathway that will fit your needs.



# WIDE SCOPE KNOWLEDGE FOR REAL WORLD APPLICATION

- Covers a wide scope of psychological fields and subjects
- Contemporary subjects and issues
- 6 electives to choose from

## BACHELOR OF PSYCHOLOGY (HONOURS)

KD [N/311/6/0114][03/27][MQA/PA13378]

### Programme Modules

#### Year 1

- English 1
- English 2
- Information Technology and Systems
- Personal Development and Communication Skills
- Introduction to Psychology
- History of Psychology
- Biological Psychology
- Lifespan Development
- Elementary Statistics
- Introduction to Applied Psychology

#### Year 2

- Research Methodology 1: Quantitative Methods
- Research Methodology 2: Qualitative Methods
- Professional Issues: Ethics, Conduct and Law
- Theories of Learning
- Abnormal Psychology
- Counselling Skills
- Cognitive Psychology
- Personality Theories
- Entrepreneurship
- Elective 1

#### Year 3

- Child Psychology
- Educational Psychology
- Clinical Psychology
- Social Psychology
- Final Year Project
- Industrial Training
- Elective 2
- Elective 3

#### Electives (Choose 3 only)

- Cross-cultural Psychology
- Criminal Psychology
- Cyberpsychology
- Substance Abuse
- Industrial-organisational Psychology
- Psychology Seminar

#### MPU

- Hubungan Etnik / Bahasa Melayu Komunikasi II\*
- Tamadun Islam dan Tamadun Asia Tenggara / Malaysian Studies 3
- Effective Listening
- Personal Health Management
- Pengurusan Ko-kurikulum



**SEGi**  
UNIVERSITY

### Career Opportunities

- Human resource executive
- Special needs therapist/ shadow aide for special education
- Corporate trainer
- Market researcher
- General manager
- General administrator
- Early childhood practitioner/ child development consultant
- Social worker
- Academic tutor
- Marketer/sales executive
- Entrepreneur
- Advertising and public relations consultant
- Recruitment consultant

\*For Malaysian students who do not have a credit in SPM BM



# TRAINING AGILE AND CREATIVE PSYCHOLOGISTS OF THE FUTURE

- Distinct focus on critical thinking
- Practical assignments and learning
- 2 minors to choose from

## BSC IN PSYCHOLOGY (4+0)

SJ (R/311/6/0065) (05/25) (MQA/FA6135) • KL (R/311/6/0056) (01/27) (MQA/FA4730) • PG (R/311/6/0072) (10/27) (MQA/FA6533)

### Programme Modules

#### Year 1

- Public Speaking Skills / Bahasa Kebangsaan A\*
- Visual Arts
- Introduction to Communication
- University Orientation
- Composition and Modern English I
- Computer Concepts and Applications
- Pre-Calculus Algebra
- World History from 1500 (International students)
- Islamic Asian Civilizations (Local students)
- Composition and Modern English II
- General Psychology

#### Year 2

- Principles of Biology with lab
- Principles of Biology
- World Literature before 1660
- Orientation to Psychology
- Basic Statistics
- World Literature after the 1660
- General Chemistry with lab
- General Chemistry
- Developmental Psychology
- Community Service
- Social Psychology
- Abnormal Psychology
- Ethnic Relations  
(Local and international students)
- Bahasa Melayu Komunikasi 2  
(International students)

#### Year 3

- Research Methods
- Theories of Learning
- Forensic Psychology
- Psychological Tests and Measurements
- Theories of Personality
- Guided Independent Research I
- Personal Health Management

#### Select modules according to the minor:

##### Minor: Communications

- Interpersonal Communication
- Conflict Management
- International / Intercultural Communication
- Group Discussion and Leadership
- Organisational Communication
- Communication Research

##### Minor: Global Business

- Principles of Accounting I
- Principles of Microeconomics
- Principles of Management
- Principles of Marketing
- Global Human Resource Management
- Organisational Behavior

#### Year 4

- Physiological Psychology
- Industrial / Organisational Psychology
- History and System of Psychology
- Guided Independent Research II
- Field Experience in Psychology I
- Cognitive Psychology
- Principles of Counseling
- Senior Seminar in Psychology
- Field Experience in Psychology II

**TROY**  
UNIVERSITY™

### Career Opportunities

With a Bachelor of Science in Psychology, you are equipped with good research and writing skills, analytical and critical thinking and problem solving skills. Many graduates find jobs in mental health services, human resources, administrative support and education. Some may further their specialisation and career path as clinical psychologists, developmental psychologists, family and marriage counselors, psychotherapists and social workers.

\*For Malaysian students who do not have a credit in SPM BM

# BSC (HONS) PSYCHOLOGY (3+0)

SJ [N/ 311 /6 /0112][06/24][MQA/PA11475]

## Programme Modules

### Year 1

- Introduction to Psychology (Part A)
- Research Methods in Psychology One (Part A)
- Introduction to Applied Psychology (Part A)
- Academic Skills for Psychology
- Introduction to Psychology (Part B)
- Research Methods in Psychology One (Part B)
- Introduction to Applied Psychology (Part B)
- The Psychology of Resilience and Success
- Falsafah dan Isu Semasa (Local students)
- Bahasa Melayu Komunikasi 2 (International students)
- Penghayatan Etika dan Peradaban (Local students)
- Penghayatan Etika dan Peradaban / Falsafah dan Isu Semasa (International students)

### Year 2

- Brain and Behaviour
- Developmental Psychology
- Psychopathology and Clinical Psychology
- Psychological Research Methods
- Entrepreneurship / Personal Health Management
- Cognitive Psychology and Neuroscience
- Social Psychology
- Personality and Individual Differences
- Research Statistics for Psychology
- Elective (Choose one of the following):
  - Organisational Psychology
  - Health Psychology
  - Counselling Theories and Techniques
- Work Placement 1

### Year 3

- Psychology Project (Part A)
- Applied Positive Psychology
- Psychology and Neuroscience: Trends and Issues
- Child Psychology and Education
- Public Speaking / Bahasa Kebangsaan A\*
- Psychology Project (Part B)
- Adult Development and Mental Health
- Social Forensic Psychology
- Clinical Child and Adolescent Psychology
- Community Service
- Work Placement 2

### MPU

- Effective Listening
- Principles of Entrepreneurship
- Co-curriculum: Sustainability Thinking



## Career Opportunities

As Psychology graduates, you will be well-prepared for careers in forensic, education, health, occupational, counselling, clinical psychology, teaching, media and advertising, market research, human resource, business, marketing and sales, and social sciences.

\*For Malaysian students who do not have a credit in SPM BM

# LEARN AT THE FOREFRONT OF PSYCHOLOGY

- *Designed and delivered by active researchers and experts*
- *Distinct focus on research (being the foundation for Postgrad)*
- *Contemporary subjects and syllabus*





# BUILDING A STRONG FOUNDATION IN PSYCHOLOGY

- Practical assignments and learning
- Distinct focus on positive psychology
- Covering a wide range of contemporary subjects

## DIPLOMA IN PSYCHOLOGY

SJ (R2/311/4/0021) [07/23] [A8786] • PG (N/311/4/0128) [12/26] [MQA/PA15092] • SWK (R2/311/4/0085) [01/27] [MQA/FA1374]

### Programme Modules

#### Year 1

- Applied Digital Skills
- General Psychology
- Orientation to Psychology
- Cyberpsychology
- General Language Training
- Falsafah dan Isu Semasa / Penghayatan Etika dan Peradaban (Local students)
- Bahasa Melayu Komunikasi 1 (International students)
- Inclusion in Early Childhood
- Lifespan Development
- Human Resource Management
- Growth Mindset / Bahasa Kebangsaan A\*
- Motivation, Emotions and Learning
- Social Psychology
- Cognitive Psychology
- Introduction to Marketing

#### Year 2

- Positive Psychology
- Personality
- Basic Statistics
- Introduction to Criminology
- Behaviour and the Brain
- Industrial Revolution 4.0 in Malaysia
- Educational Psychology
- Introduction to Research Methods in Psychology
- Abnormal Psychology
- Issues and Ethics in the Helping Profession
- Co-curriculum Management
- Principles of Counselling
- Health Psychology
- Industrial and Organisational Psychology

#### Year 3

- Internship



### Career Opportunities

Pursue career options as a psychologist or consultant in rehabilitation centres or in the area of social service. Alternatively, you can pursue employment in the fields of education & training, consultancy, sales and marketing, human resource and marketing research.

\*For Malaysian students who do not have a credit in SPM BM



## FOUNDATION IN SCIENCE

KD (R2/010/3/0356)(07/25)(MQA/A4432); MQA/PA14176 N-DL/010/3/0024

### Programme Modules

#### Semester 1

- Chemistry 1
- Mathematics 1
- Elective 1\*
- Elective 2\*

#### Semester 2

- Chemistry 2
- Mathematics 2
- Elective 3\*
- Elective 4\*

#### Semester 3

- Chemistry 3
- Mathematics 3
- Academic English
- Computer Application
- Elective 5\*

### Elective (by Specialisation)\*

#### General

- Biology 1
- Physics 1
- Biology 2
- Physics 2
- Physics 3

#### Health Sciences

- Biology 1
- Public Speaking
- Biology 2
- Information Technology
- Introduction to Patient Care

#### Engineering

- Physics 1
- Public Speaking
- Physics 2
- Information Technology
- Physics 3

\* Electives are subject to change without prior notice.

\* Students intending to articulate into the Health Sciences degree programmes will have a choice to take either General or Health Sciences Pathway.

\* Students intending to articulate into Engineering degree programmes will have a choice to take either General or Engineering Pathway.

## FOUNDATION IN SCIENCE

SJ (R3/000/3/0021) (04/28) (A7755)

### Programme Modules

- Chemistry I
- Mathematics I
- Physics I
- Biology I
- English I
- Chemistry II
- Mathematics II
- Physics II
- Basic Information and Communication Technologies (ICT)
- English II
- Chemistry III

- Engineering Mathematics
- Physics III
- Biology II
- Biochemistry
- Thinking Skills

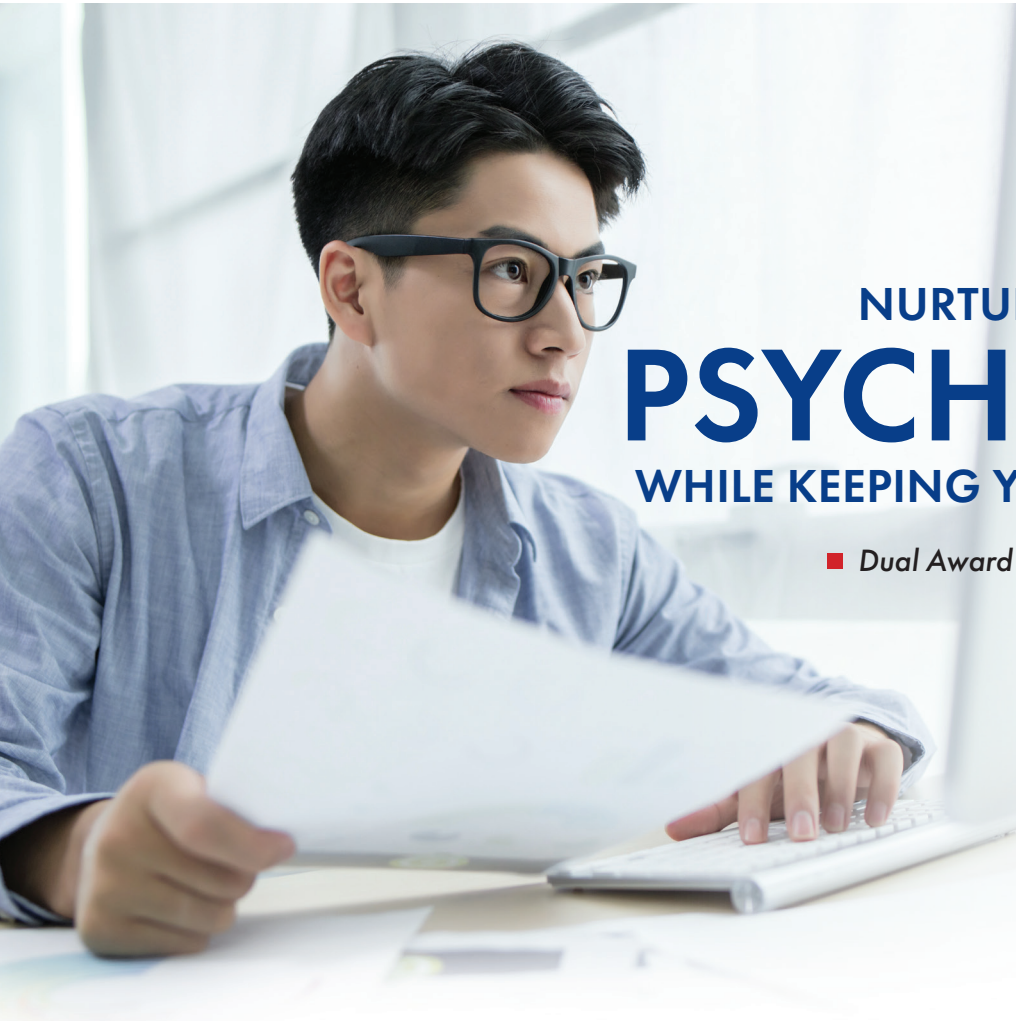
### Why study this programme?

This qualification is specially designed for students with SPM, O-Level or equivalent qualifications. Upon successful completion of this programme, students may enrol in a range of health sciences or degree programmes engineering.

# FASTEST PATHWAY TO A DEGREE

- Discover your passion in Psychology while keeping your options open
- Fastest pathway into a wide variety of Degree Programmes
- Build a strong foundation in Science





# NURTURE YOUR PASSION IN PSYCHOLOGY WHILE KEEPING YOUR OPTIONS OPEN

- Dual Award option with University of Greenwich
- Covers a diverse field of business

## FOUNDATION IN COMMERCE

KL (R2/010/3/0258) (02/25) (A5212)

### Programme Modules

#### Year 1

- Quantitative Methods I
- Accounting I
- English I
- Computer Application
- Introduction to Business
- Accounting II
- Principles of Economics
- English II
- Quantitative Methods II
- Personal and Professional Development
- Principles of Marketing
- Quantitative Methods III
- Accounting III
- Business Mathematics

Dual Award\*



**SEGi**  
COLLEGE



**UNIVERSITY OF  
GREENWICH**

\* Terms & Conditions apply

### Why study this programme?

The Foundation provides you with a perspective on management accounting, essential for management and operating decisions, with the knowledge and skills gained.

# FOUNDATION IN ARTS

KD (R2/010/3/0406)[07/26][MQA/FA0193]; MQA/PA4175 N-DL/010/3/0025

## Programme Modules

### Semester 1

- General Language Training
- Computer Application
- Introduction to Business
- Mathematics
- Statistics \*

### Semester 2

- Academic English
- Elective 1
- Elective 2
- Elective 3
- Elective 4

### Semester 3

- Public Speaking
- Critical Thinking Skills
- Principles of Economics
- Elective 5

## Electives

### Business & Accounting

- Introduction to Financial Accounting
- Fundamental of Management
- Intercultural Communication
- Information Technology
- Introduction to Marketing

### Communication Studies/English & PR

- Interpersonal Communication
- Intercultural Communication
- Fundamental Photography
- Information Technology
- Introduction to Marketing

### Information Technology

- Programming Methodology
- Interpersonal Communication
- Fundamental of Management
- Intercultural Communication
- Information Technology

### Quantity Survey/Hospitality/ Education/Psychology

- Information Technology
- Interpersonal Communication
- Fundamentals of Management
- Introduction to Marketing
- Intercultural Communication

### Creative Design/ Architecture/Interior Architecture

- Colour & Form
- Drawing Fundamentals
- Fundamental Photography
- Intercultural Communication
- Interpersonal Communication

\*OLD Mode

# FOUNDATION IN ARTS

SJ (R2/010/3/0541) [07/26] [MQA/FA0452]

## Programme Modules

### Year 1

- Thinking Skills
- English I
- Mathematics
- Basic Information and Communication Technologies (ICT)
- Introduction to Psychology
- Essentials of Economics
- English II
- Introduction to Law
- Introduction to Sociology
- Co-curriculum
- Introduction to Management
- Writing and Research Skills
- Electives (Choose any two):
  - Introduction to Finance
  - Introduction to Visual Arts
  - Introduction to Mass Media and Communication
  - Introduction to Legal Skills

### Why study this programme?

This qualification is specially designed for students with SPM, O-Level or equivalent qualifications and who would like to pursue a bachelor's degree at the university. Upon successful completion of the Foundation in Arts programme, students may further their studies in a wide range of degree programmes depending on units completed during their studies. Students may be eligible to apply for advanced standing.

# A FOUNDATION WITH THE WIDEST PATHWAYS

- Dual Award option with University of Greenwich
- Fastest pathway into a wide variety of Degree Programmes
- 4 electives to choose from





**SEGi University** (100589-U)

☎ 603 6145 1777    📞 011 1501 8838

**SEGi College Kuala Lumpur** (42114-V)

☎ 603 2070 2078    📞 012 988 7482    📞 1800 88 8028

**SEGi College Subang Jaya** (284515-V)

☎ 603 8600 1777    📞 010 313 0303

**SEGi College Penang** (187620-W)

☎ 604 263 3888    📞 013 629 4880

**SEGi College Sarawak** (172726-T)

☎ 6082 252 566    📞 017 859 2566    📞 1300 88 7344

**Regional Centre:**

**SEGi University Regional Centre, Johor Bahru**

☎ 607 235 9188    📞 010 313 0303

The best in you, made

**POSSIBLE**

The information in this brochure is correct at the time of printing (March 2023).  
Changes may be made without prior notice. Copyright 2023. All rights reserved.

[segi.edu.my](http://segi.edu.my)

Chat with us today!  
**SCAN HERE**

